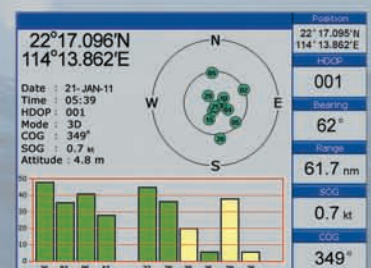
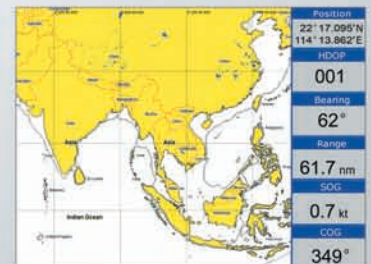
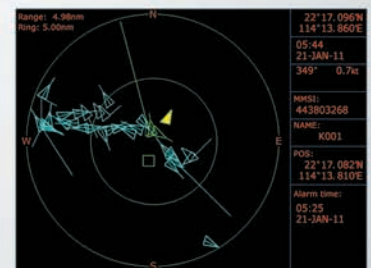
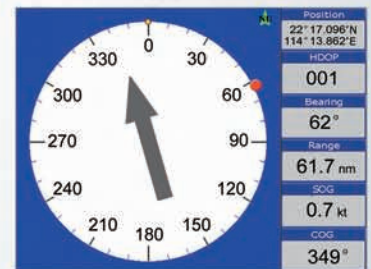


ONWA®

MODEL KP-6299A/6299B



- Built-in AIS Receiver (6299B) or AIS Class B Transponder (6299A)
- High resolution TFT day-view LCD display
- SD-cards slot for C-Map MAX and user data
- C-Map MAX and K-Chart Selectable
- Tide table and Celestial display
- Versatile display mode include
 - Plotter Screen
 - Nav.Data
 - Satellite Information
 - AIS Display
 - Compass Screen
- GOTO track navigation
- Map orientation select
- Proximity waypoints alarms
- Perspective View
- Palette
 - Normal
 - Daylight - exposed to sunlight
 - Night - in dark environment
 - NOAA- paper chart colors
- Wind speed and direction display by optional sensor input
- AIS guard zone with CPA and TCPA alarm



KP-6299A/6299B

SPECIFICATION OF KP-6299A/6299B

PLOTTER CHARACTERISTICS

Waypoints/icons:	15,000 waypoints with name, symbol, 10 proximity waypoint
Routes:	waypoint up to 200 points each, plus MOB and Track Navigation or Goto Track modes
Tracks:	30,000 point automatic track log; 15 saved track (up to 2000 track points each)let you retrace your path in both directions
Alarms:	XTE, Anchor drag, arrival, speed, voltage, proximity waypoint and time,AIS alarm.
Pallete:	Normal Daylight exposed to sunlight Night in dark environment NOAA paperchart colors
Tides:	Tide data
Projection:	Mercator projection
Position format:	Lat/Lon
Basemap:	Built-in Onwa K-Chart
External Map:	SD Cards slot for C-Map MAX
User data storage:	Internal backup of user settings, or external SD-card
Plot Interval:	1s to 99h or 0.01 nm to 9.99nm
Plotting scales:	0.01nm to 1,000nm
Nav Datat:	Inputs: \$--DBT, \$--DPT, \$--GGA, \$--GLL,\$--GSA, \$--GSV, \$--HDG,\$--HDM,\$--HDT,\$--MTW, \$--RMB,\$--RMC, \$--VTG, \$--ZDA, \$--VWR,\$--VWT,\$--MWD, \$--VPW, Outputs: \$--AAM, \$--APB, \$--BOD,\$--BWC,\$--GGA, \$--GLL, \$--RMB,\$--RMC,\$--VTG, \$--XTE, \$--ZDA Outputs for autopilot: \$--AAM, \$--APB, \$--BOD,\$--VTG
PERSPECTIVE VIEW:	On/off

Power Supply 10.5 to 35VDC, current drain <500mA at 12V

Physical

Size:	228mm(H)X138mm(W)X79mm(D)
Weight:	0.9kg
Display:	5.6-inches ColorTFT day-view LCD 640 X 480 pixels
Waterproofing:	Display unit: IPX5 Antenna unit: IPX6
Temperature range:	Display unit: -15°C to +55°C Antenna unit: -25°C to +70°C

AIS Characteristics

Transmitter x 1	(For KP-6299A ONLY)
Receiver x 2	(one time shared between AIS/CDSC)
Frequency :	156.025 to 162.025 MHz iin 25KHz steps
Output power :	2 watts typical(For KP-6299A only)
Channel bandwidth :	25KHz
Channel step :	25KHz
Modulation modes :	25KHz GMSK (AIS,TX AND RX) 25KHz AFSK (DSC,RX only)
Bit rate :	9600 b/s ± 50 ppm (GMSK) 1200 b/s ± 50 ppm (FSK)
RX sensitivity :	Sensitivity - 107dBm25 Khz Message error rate less than :2% Co-channel 10dB IMD 62dB Bloching 84dB

EQUIPMENT LIST

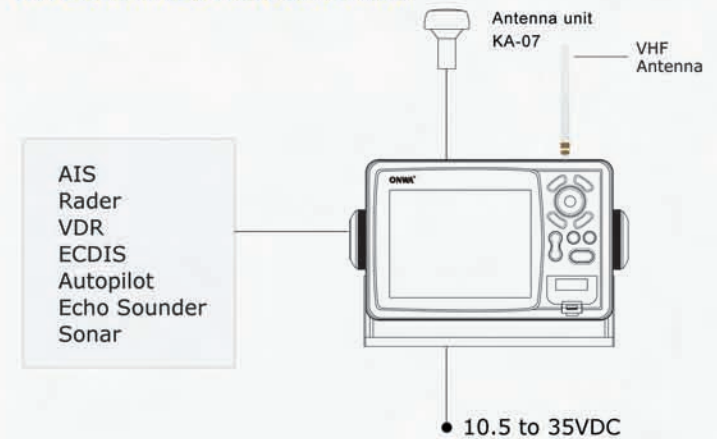
Standard

1. Display unit
2. GPS Antenna unit with 10m cable
3. Operator manual
4. Installation materials and standard spare parts

GPS RECEIVER CHARACTERISTICS

Receiver:	50 parallel channel GPS receiver continuously Tracks and uses up to 50 satellites to compute and update your position
Acquisition times:	Cold start: 27 seconds average Warm start: 27 seconds average Hot start: 1 seconds average
Update rate:	1/second,continuous
Accuracy:	Position: 2.5 meters(95%) without S/A Velocity: 0.1 Meter/sec without S/A Time: ±100ns synchronized to GPS time
Dynamics:	Altitude: 50,000m Max Velocity: 500 m/s Acceleration: 4g Max
Datum:	WGS 84 & Others
Interfaces:	NMEA 0183 input and output,RS232 and RS422 output
Antenna:	KA07

INTERCONNECTION DIAGRAM



DISPLAY UNIT

